



ZS 232-11-I-2888

- galvanically separated contact bridges
- Screw connection
- Thermoplastic enclosure

Data

Ordering data

Product type description	ZS 232-11-I-2888
Article number (order number)	133009761
EAN (European Article Number)	8905236101120
eCl@ss number, version 12.0	27-27-06-01
eCl@ss number, version 11.0	27-27-06-01
eCl@ss number, version 9.0	27-27-06-01
ETIM number, version 7.0	EC000030
ETIM number, version 6.0	EC000030

General data

Standards	EN IEC 60947-5-1
Housing material	Glass-fibre, reinforced thermoplastic
Material of the housing cover	Glass-fibre, reinforced thermoplastic
Plunger material	Stainless steel (V2A)

General data - Features

Number of normally closed (NC)	1
--------------------------------	---

Number of normally open (NO)	1
------------------------------	---

Mechanical data

Actuating element	Plunger
Mechanical lifetime, minimum	20,000,000 Operations
Actuating force	9 N
Contact opening	2 x 2 mm
Actuating speed	10 mm/min
Note (Switchover time)	Switchover time in accordance with actuating speed

Mechanical data - Connection technique

Termination	Screw terminals
Cable section, maximum	2.5 mm ²

Ambient conditions

Degree of protection	IP40
Ambient temperature	-30 ... +80 °C

Ambient conditions - Insulation values

Rated insulation voltage U_i	500 V
Rated impulse withstand voltage U_{imp}	6 kV
Degree of pollution	3

Electrical data

Thermal test current	10 A
Utilisation category AC-15	230 VAC
Utilisation category AC-15	4 A
Utilisation category DC-13	24 VDC
Utilisation category DC-13	1 A
Switching principle	Snap action with self-cleaning contact

Bounce duration, maximum	3 ms
Maximale Schalthäufigkeit	5,000 /h
Switchover time, maximum	5 ms
Material of the contacts, electrical	Silver (AgNi 15)

Pictures

Product picture (catalogue individual photo)



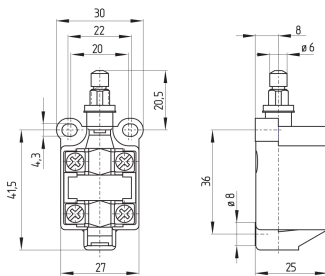
ID: kz232f01

| 354.6 kB | .jpg | 130.175 x 257.528 mm - 369 x 730 px - 72 dpi

| 149.6 kB | .png | 74.083 x 146.403 mm - 210 x 415 px - 72 dpi

| 65.6 kB | .jpg | 62.442 x 123.472 mm - 177 x 350 px - 72 dpi

Dimensional drawing basic component



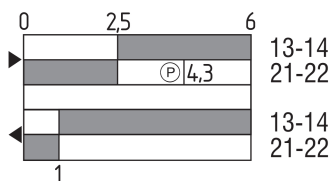
ID: kz232g01

| 56.7 kB | .cdr |

| 5.0 kB | .png | 74.083 x 61.736 mm - 210 x 175 px - 72 dpi

| 147.2 kB | .jpg | 352.778 x 294.569 mm - 1000 x 835 px - 72 dpi

Switch travel diagram



ID: kz232s06

| 60.5 kB | .ai | 210.002 x 297 mm - 595 x 841 px - 72 dpi

| 1.5 kB | .png | 73.731 x 104.422 mm - 209 x 296 px - 72 dpi

| 75.3 kB | .jpg | 352.778 x 205.317 mm - 1000 x 582 px - 72 dpi

Schmersal India Pvt. Ltd., Plot No - G-7/1, Ranjangaon MIDC, Tal. - Shirur, Dist.- Pune 412 220

The details and data referred to have been carefully checked. Images may diverge from original. Further technical data can be found in the manual. Technical amendments and errors possible.

Generated on: 22/08/2025, 12:09 pm